

## Data Sheet

---

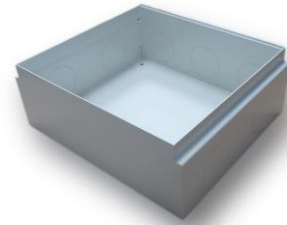
### Shallow concrete-mounted enclosure for EM/FLB-SCF245P or EM/FLB-SCF245PS boxes

#### Markings:

Code: EM/FLB-SCF245-PJB-FB

#### Description and Technical Characteristics of the Product:

Shallow concrete-mounted enclosure (box) for EM/FLB-SCF245P or EM/FLB-SCF245PS boxes with frames Allows installation in a drilled hole or in poured concrete. Reduced depth, allows to drill a shallower recess or pour less thick floor layer, which is at the expense of less space for cables in the enclosure or the inability to lower the mounting plane of sockets in a box with frame. It has knockouts on the walls for punching holes for cable entry.



NOTE: if it is necessary to lower the position of the mounting plane of the sockets in the box with frame, it is recommended to select a deep box (see related products).

#### Installation method:

##### in concrete:

drill a hole in the floor, cut holes for cable entry in concrete-mounted enclosure (code: EM/FLB-SCF245-PJB-FB), place the enclosure in the required location on the floor, fixing it to the floor with screws, if necessary, level it, insert the wires into the enclosure located in the floor; insert the wires into the box with frame through the previously cut holes; screw the box with frame to the enclosure placed in the concrete using the existing mounting screws.

##### in poured concrete:

cut holes for cable entry in concrete-mounted enclosure (code: EM/FLB-SCF245-PJB-FB), place the enclosure in the required place on the floor (if necessary, drill a deeper hole), fixing it to the floor with screws, if necessary, level it, insert the wires into the enclosure located in the concrete; after pouring concrete, insert the wires into the box with frame through the previously cut holes; screw the box with frame to the enclosure placed in the concrete using the existing mounting screws.

#### Markings:

Shallow concrete-mounted enclosure for EM/FLB-SCF245P or EM/FLB-SCF245PS boxes code: EM/FLB-SCF245-PJB-FB

#### Products compatible with the enclosure:

## **Data Sheet**

---

EM/FLB-SCF245P 12-module floor box for mounting fixtures 22.5x45 (45x45)

EM/FLB-SCF245PS 12-module floor box for mounting fixtures 22.5x45 (45x45)

### **Similar products:**

EM/FLB-SCF245-PJB                      Concrete-mounted enclosure for EM/FLB-SCF245P or EM/FLB-SCF245PS boxes

### **Enclosure (box):**

finish: powder-coated steel

colour - grey

dimensions (W x H x D): 220x252x82mm

Weight 1.1 kg

Note: due to the technological process of production, the dimensions given may vary slightly.

We have made every effort to ensure that the information presented is accurate and complete. However, we are not responsible for the accuracy and completeness of the data and, in particular, we cannot guarantee that this specification does not contain errors or mistakes. The information contained in this specification may be changed at any time without notice.