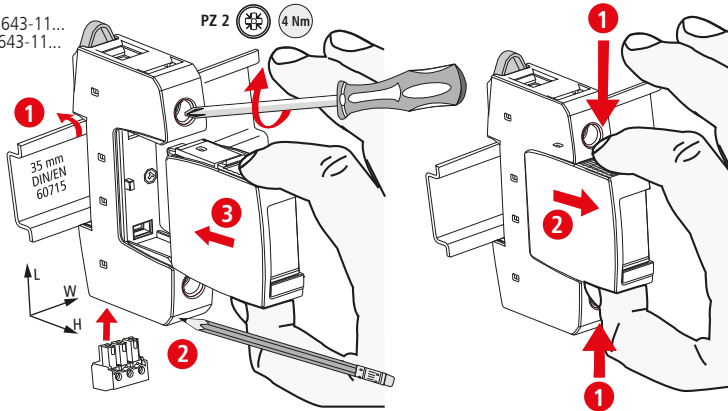


DEHNguard S ACI DG S ACI 385 FM

- DE Einbauanleitung
- GB Installation instructions
- IT Istruzioni di montaggio
- FR Instructions de montage
- NL Montagehandleiding
- ES Instrucciones de montaje
- PT Instruções de montagem
- DK Monteringsvejledning
- SE Monteringsanvisning
- FI Asennusohje
- GR Οδηγίες συναρμολόγησης
- PL Instrukcja montażu
- CZ Montážní návod
- TR Kurulum Talimatları
- RU Инструкция по монтажу
- CN 安装说明
- HU Szerelési útmutató
- JP 設置説明書



II IEC 61643-11...  
2 EN 61643-11...



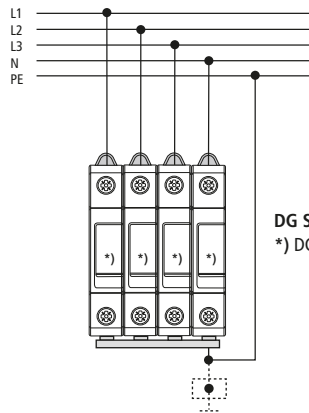
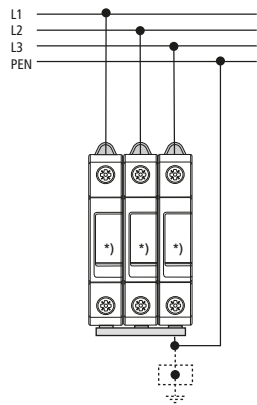
	DG S ACI 385 FM
	DG MOD ACI 385
$U_N$ / Tol.: $\pm 10\%$	230 V (50/60 Hz)
$U_C$	385 V (50/60 Hz)
$I_{SCCR}$	25 kA <sub>rms</sub>
$I_{max}$ (8/20 $\mu$ s)	40 kA
$\theta$	-40°C ... +80°C
$\phi$	5% ... 95%
$I_{PE}$	< 5 $\mu$ A
IP 1)	20
L x W x H	90 mm x 18 mm x 77 mm

	12 mm	12 mm	12 mm
min. $\square$ L, N, $\perp$			1.5 mm <sup>2</sup>
max. $\square$ L, N, $\perp$	25 mm <sup>2</sup>		35 mm <sup>2</sup>
$\square$	16 mm <sup>2</sup> Cu		$\geq 15.5$ mm

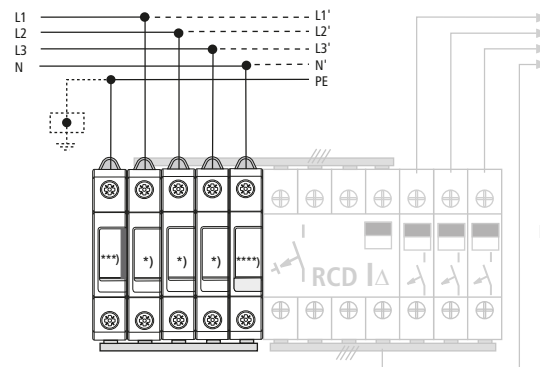
TN-C

TN (-C) -S

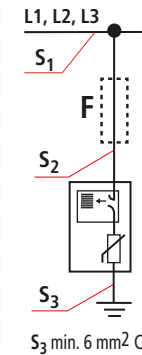
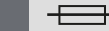
TT 3+1



DG S ACI 385 FM  
\*) DG MOD ACI 385

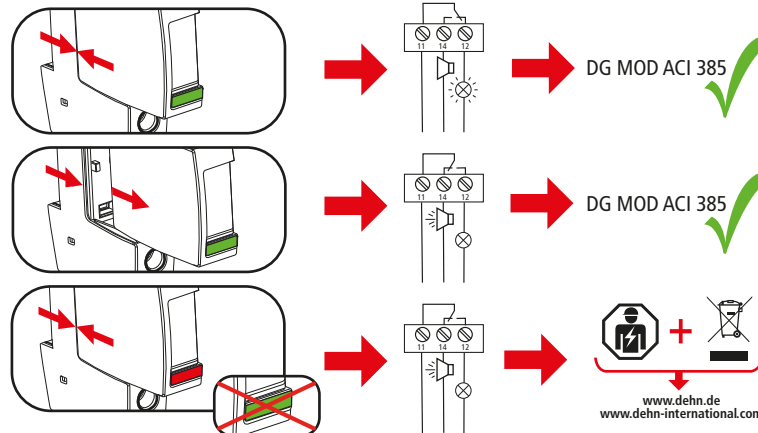
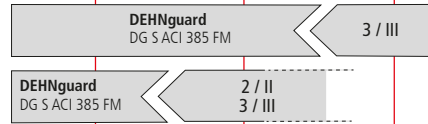


DG S ACI 385 FM  
\*) DG MOD ACI 385  
\*\*\*) DGP C S (FM)  
\*\*\*\*\*) DK 25



$S_1$ / mm <sup>2</sup>	max. Ik	$S_2$ / mm <sup>2</sup>	$S_3$ / mm <sup>2</sup>	
$\begin{matrix} \text{mm}^2 \\ \text{X} \end{matrix} - \begin{matrix} \text{mm}^2 \\ \text{X} \end{matrix} \text{ 3)}$	$\leq 25$ kA	$\geq 6$ mm <sup>2</sup> 2)	$\geq 6$ mm <sup>2</sup>	
$\begin{matrix} \leq 25 \text{ mm}^2 \\ \leq 35 \text{ mm}^2 \end{matrix}$	$\leq 25$ kA	$= S_1$	$= S_1$ min. 6 mm <sup>2</sup>	

LPZ 0<sub>A</sub> | LPZ 0<sub>B</sub> | LPZ 1 | LPZ 2 | LPZ 3



DEHNguard S ACI DG S ACI 385 FM	
	$U_N$ / $I_N$ AC: 250 V / 0.5 A DC: 250 V / 0.1 A 125 V / 0.2 A 75 V / 0.5 A
	max. 1.5 mm <sup>2</sup>

