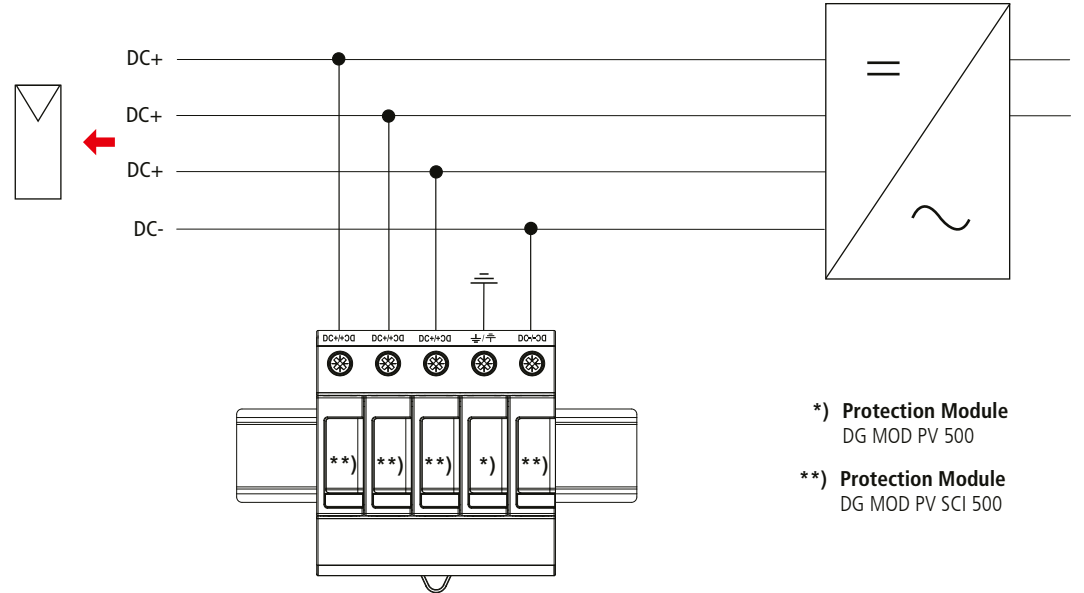
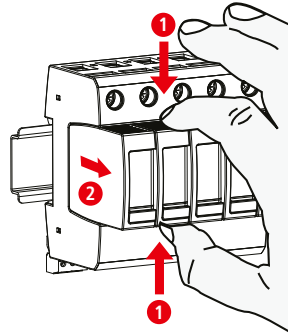
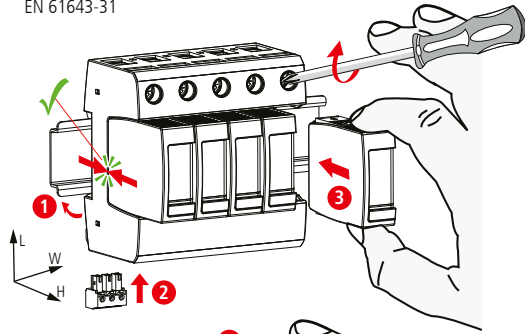


**DEHNguard** DG M PV2 SCI SN1868 FM

- DE Einbauanleitung
- GB Installation instructions
- IT Istruzioni di montaggio
- FR Instructions de montage
- NL Montagehandleiding
- ES Instrucciones de montaje
- PT Instruções de montagem
- DK Monteringsvejledning
- SE Monteringsanvisning
- FI Asennusohje
- GR Οδηγίες συναρμολόγησης
- PL Instrukcja montażu
- CZ Montážní návod
- TR Kurulum Talimatları
- RU Инструкция по монтажу
- CN 安装说明
- HU Szerelési útmutató
- JP 設置説明書

2 EN 50539-11... PZ 2 (4 Nm)  
 II IEC 61643-31  
 2 EN 61643-31

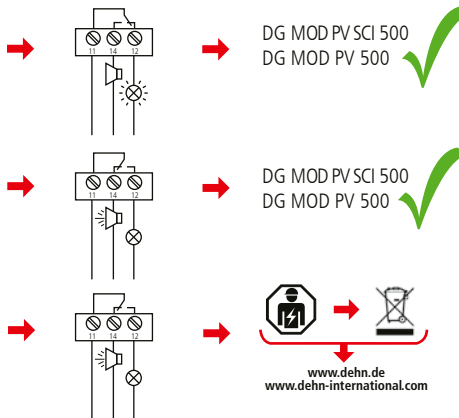
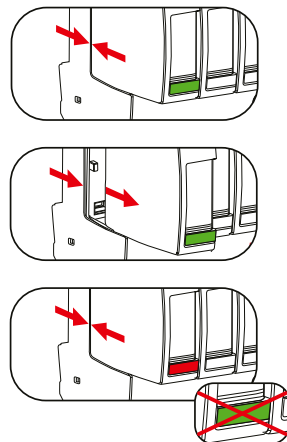


\*) Protection Module  
 DG MOD PV 500

\*\*) Protection Module  
 DG MOD PV SCI 500

DG M PV2 SCI SN1868 FM	
DG MOD PV SCI 500 / DG MOD PV 500	
$U_{CPV}$	$\leq 1000$ V DC
$I_{total}$	40 kA (8/20)
$I_{max}$	25 kA (8/20)
$I_{scpv}$	10 kA
$I_{cpv}$	$< 10$ $\mu$ A
$I_{PE, AC}$	$\leq 1$ mA
$I_{PE, DC}$	$\leq 50$ $\mu$ A
$\theta$	$-40^{\circ}C \dots +80^{\circ}C$
$\Phi$	5% ... 95%
IP 1)	20
failure behavior Ausfallverhalten	open circuit Abtrennung
PV system	earthed geerdet
L x W x H	90 mm x 90 mm x 73 mm

min. □ DC+, DC-, ⊥	1.5 mm <sup>2</sup>	
max. □ DC+, DC-, ⊥	25 mm <sup>2</sup> 35 mm <sup>2</sup>	
□	16 mm <sup>2</sup> Cu	$\leq 15.5$ mm



www.dehn.de  
 www.dehn-international.com

DEHNguard	
DG M PV2 SCI SN1868 FM	
	$U_N / I_N$ AC: 250 V / 0.5 A
	DC: 250 V / 0.1 A 125 V / 0.2 A 75 V / 0.5 A
	max. 1.5 mm <sup>2</sup>

