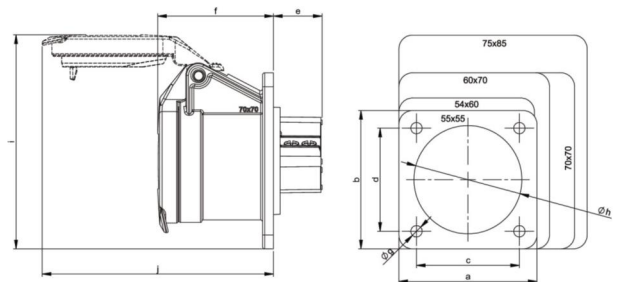


PCE data sheet

article#	382-4v
article description	CEE-flanged socket straight 70x70mm 16A 2p 24/42VAC 100-200Hz IP44/IP54 TWIST
description long	CEE-flanged socket straight 70x70mm 16A 2p 24/42VAC 100-200Hz IP44/IP54 TWIST housing material: PA6 rated current: 16A number of poles: 2 (2P) clock-position: 4h rated voltage/frequency: 24/42V~ / 100-200Hz contacts: brass nickel plated connection technology: screw terminals dimensions (flange/fixing center): 70x70 mm / 56x56 mm IP protection class: IP44/IP54
GTIN (EAN)	9003399684067
country of origin	AT
customs number	85366990
net weight	0.120 kg
packaging quantity	10
minimum order quantity	10

ETIM 7.0	EC001317
IEC-amperage	16 A
Voltage acc. EN 60309-2	20-25 V / 40-50 V (100-200 Hz) green
Number of poles	2
Clock hour position	4 h
Identification colour	Green
Degree of protection (IP)	IP54
Connection system	Schraubklemme
Angle of plug	Straight
Material	Plastic
Flange size vertical	70 mm
Drill hole distance vertical	56 mm
Flange size horizontal	70 mm
Drill hole distance horizontal	56 mm

wire flexible	1-10 mm ²
wire solid	1,5-10 mm ²
contact screws	160 Ncm
dismantling length	70 mm
stripping length	14-16 mm



www.manufacturer-safety.info