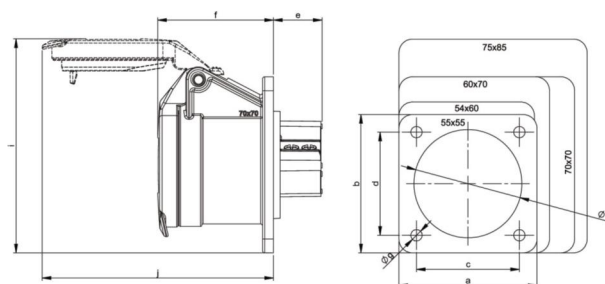


PCE data sheet

article#	382-12f8v
article description	CEE-flanged socket straight 60x70mm 16A 2p 42VAC 50/60Hz IP44/IP54 TWIST
description long	CEE-flanged socket straight 60x70mm 16A 2p 42VAC 50/60Hz IP44/IP54 TWIST housing material: PA6 rated current: 16A number of poles: 2 (2P) clock-position: 12h rated voltage/frequency: 42V~ / 50+60Hz contacts: brass nickel plated connection technology: screw terminals dimensions (flange/fixing center): 60x70 mm / 47x53 mm IP protection class: IP44/IP54
GTIN (EAN)	9003399001598
country of origin	AT
customs number	85366990
net weight	0.112 kg
packaging quantity	10
minimum order quantity	10

ETIM 7.0	EC001317
IEC-amperage	16 A
Voltage acc. EN 60309-2	40-50 V (50+60 Hz) white
Number of poles	2
Clock hour position	12 h
Identification colour	White
Degree of protection (IP)	IP54
Connection system	Schraubklemme
Angle of plug	Straight
Material	Plastic
Flange size vertical	70 mm
Drill hole distance vertical	53 mm
Flange size horizontal	60 mm
Drill hole distance horizontal	47 mm

wire flexible	1-10 mm ²
wire solid	1,5-10 mm ²
contact screws	160 Ncm
dismantling length	70 mm
stripping length	14-16 mm



www.manufacturer-safety.info