



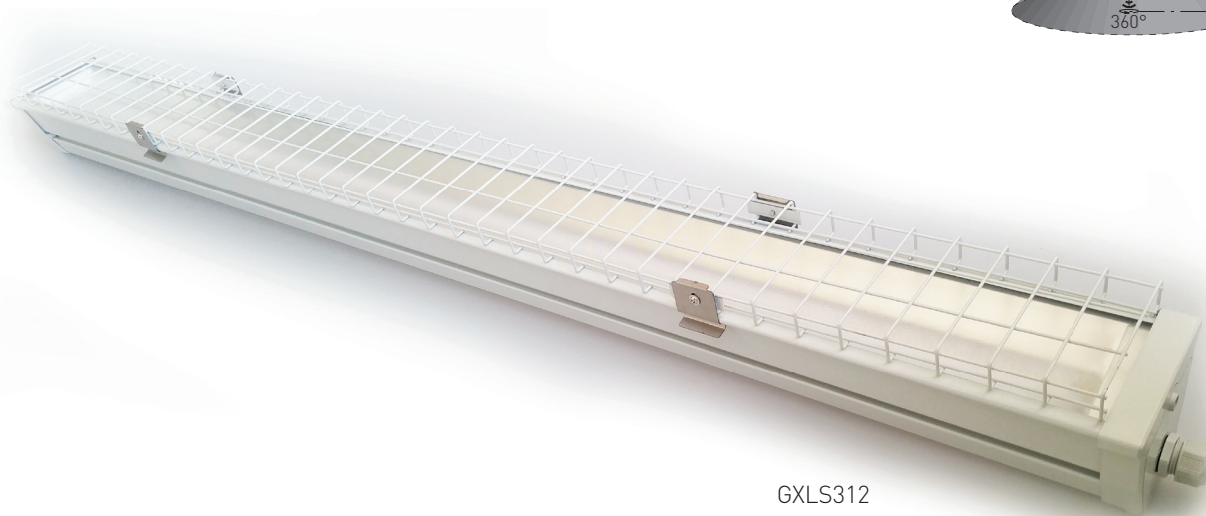
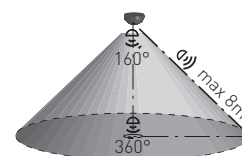
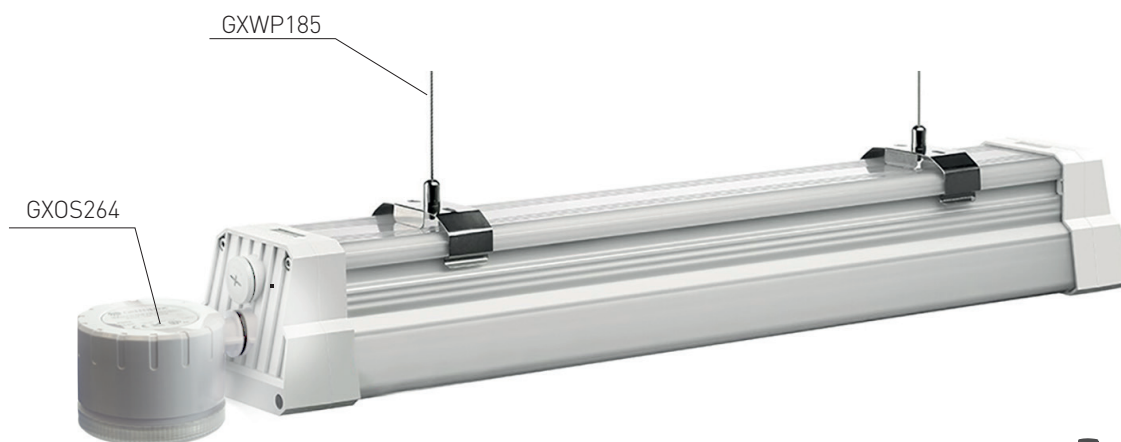
DUST PROFI LED - ACCESSORIES




-  5,8GHz
-  + TIME -
8s-30min
-  + SENS -
1-8m
-  + LUX -
5-2000
-  1-8m
-  360°
-  160°

- AKCESORIA MONTAŻOWE
- GXWP185 - regulowana, stalowa linka zwieszakowa, max = 1,5m
- GXOS264 - zintegrowany mikrofalowy czujnik HF
- maksymalne obciążenie mikrofalowego czujnika max. 5A (Σmax. 800W / DUST PROFI LED)
- możliwość płynnej regulacji:
 - tryb: noc/dzień (-LUX+)
 - detekcji ruchu (-SENS+)
 - czasu (-TIME+)
- GXLS312 - siatka ochronna do DUST PROFI LED NG
- GXSP020 - 3-stykowe złącze IP68



GXSP020



		 EAN
ROPES DUST PROFI LED 1pcs	GXWP185	8592660111643
PROFI SENSOR HF 360°	GXOS264	8592660112978
PROTECTIVE GRID DPL NG	GXLS312	8592660118895
SCSJ IP68 3x2,5	GXSP020	8592660118147