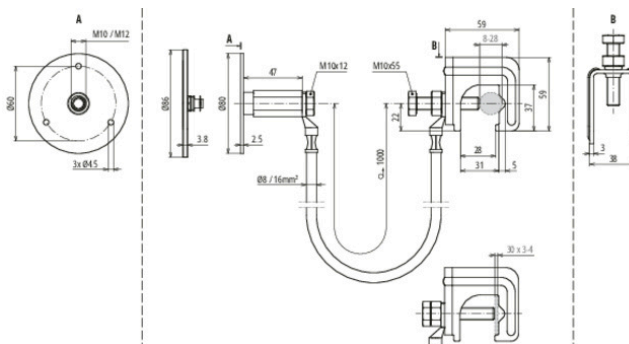


UES 16 L1000 VK RD8 28 FL30 EFP (416 950)



Figure without obligation



Connection device consisting of connecting cable with connected connecting clamp and fixed earthing terminal.

Arrangement:



Type	UES 16 L1000 VK RD8 28 FL30 EFP
Part No.	416 950 NEW
Connecting clamp material	St/bare
Clamping range Rd connecting clamp	8-28 mm
Clamping range Fl connecting clamp	30 x 3-4 mm
Screw Connecting clamp	M10 x 55 mm
Fixed earthing terminal material	StSt (V4A)
Fixed earthing point terminal thread	M10 / M12
Bridging cable material	Flexible copper conductor, frost-resistant
Bridging cable cable length	1000 mm
Bridging cable cable cross section	16 mm ²
Cable lug Bridging cable	M10 / Cu/galSn
Lightning current carrying capability (10/350 µs)	100 kA ^{*)}
Standard	EN 62561-1
Short-circuit current (AC 50 Hz / DC) (1 s; ≤ 300°C)	3.1 kA
Weight	650 g
Customs tariff number (Comb. Nomenclature EU)	85359000
GTIN	4013364508620
PU	25 pc(s)

Special lengths possible on request.

^{*)} For exact assignment, see test certificate.

We reserve the right to introduce changes in performance, configuration and technology, dimensions, weights and materials in the course of technical progress. The figures are shown without obligation.