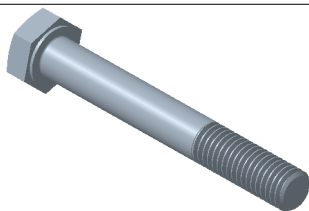
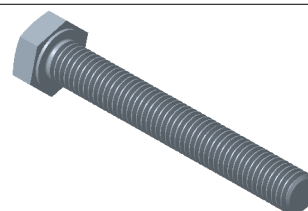


# VIS VHM VHM SCREW

Reference(s) : 801 301/04/21/23/24/31/41/44/61/71/74  
801 401/04/11/14/21/24/31/43/53/61/64/67/71/74/  
350 436/37/38/39/40/41/42/43/44/45/46/47



VHM PF



VHM

## 1. GAMME / RANGE

Designation	Code	Type	Poids / Weight (Kg) (lb)		L (mm) (inch)		d1	Classe / Class	Norme / Standard	Finition / Coating	Classe de résistance contre la corrosion / Class for resistance against corrosion
VHM6x12 ZnNi-HR	350 436	EN ISO 4017	0.0055	0.012	12	0,787	M6	≥ 6.8	ISO 898-1	ZnNi	Class 8 / IEC 61537
VHM6x20 EZ	801 301		0.0075	0.017	20			≥ 6.8	ISO 898-1	EZ	Class 1 / IEC 61537
VHM6x20 316L	801 304		0.0075	0.017	20			A4	ISO 3506-1	IN316L / SS316L	Class 9D / IEC 61537
VHM6x20 ZnNi-HR	350 437		0.0075	0.017	20			≥ 6.8	ISO 898-1	ZnNi	Class 8 / IEC 61537
VHM8x20 EZ	801 321		0.0137	0.030	20			≥ 6.8	ISO 898-1	EZ	Class 1 / IEC 61537
VHM8x20 ZnL	801 323		0.0137	0.030	20			8.8	ISO 898-1	ZnL	Class 6 / IEC 61537
VHM8x20 316L	801 324		0.0137	0.030	20	A4	ISO 3506-1	IN316L / SS316L	Class 9D / IEC 61537		
VHM8x20 ZnNi-HR	350 438		0.0137	0.030	20	≥ 6.8	ISO 898-1	ZnNi	Class 8 / IEC 61537		
VHM8x25 EZ	801 331		0.0149	0.033	25	≥ 6.8	ISO 898-1	EZ	Class 1 / IEC 61537		
VHM8x30 ZnL	801 443		0.0157	0.035	30	8.8	ISO 898-1	ZnL	Class 6 / IEC 61537		
VHM8x30 ZnNi-HR	350 440		0.0157	0.035	30	≥ 6.8	ISO 898-1	ZnNi	Class 8 / IEC 61537		
VHM8x40 EZ	801 341		0.0216	0.048	40	≥ 6.8	ISO 898-1	EZ	Class 1 / IEC 61537		
VHM8x40 316L	801 344	0.0216	0.048	40	A4	ISO 3506-1	IN316L / SS316L	Class 9D / IEC 61537			
VHM8x40 ZnNi-HR	350 441	0.0216	0.048	40	≥ 6.8	ISO 898-1	ZnNi	Class 8 / IEC 61537			
VHM8x45 ZnL	801 467	0.0237	0.052	45	8.8	ISO 898-1	ZnL	Class 6 / IEC 61537			
VHM8x60 PF ZnL	801 453	EN ISO 4014	0.0305	0.067	60	8.8	ISO 898-1	ZnL	Class 6 / IEC 61537		
VHM8x60 ZnNi-HR	350 442	0.0305	0.067	60	≥ 6.8	ISO 898-1	ZnNi	Class 8 / IEC 61537			
VHM10x20 EZ	801 361	EN ISO 4017	0.024	0.053	20	0,787	M10	≥ 6.8	ISO 898-1	EZ	Class 1 / IEC 61537
VHM10x25 EZ	801 371		0.027	0.060	25	0,984		≥ 6.8	ISO 898-1	EZ	Class 1 / IEC 61537
VHM10x25 316L	801 374		0.027	0.060	25	0,984		A4	ISO 3506-1	IN316L / SS316L	Class 9D / IEC 61537
VHM10x25 ZnNi-HR	350 439		0.027	0.060	25	0,984		≥ 6.8	ISO 898-1	ZnNi	Class 8 / IEC 61537
VHM10x70 EZ	801 431		0.055	0.121	70	2,756		≥ 6.8	ISO 898-1	EZ	Class 1 / IEC 61537
VHM10x70 PF ZnNi-HR	340 443		EN ISO 4014	0.055	0.121	70		2,756	≥ 6.8	ISO 898-1	ZnNi
VHM12x25 EZ	801 401	EN ISO 4017	0.039	0.086	25	0,984	M12	≥ 6.8	ISO 898-1	EZ	Class 1 / IEC 61537
VHM12x25 316L	801 404		0.039	0.086	25	0,984		A4	ISO 3506-1	IN316L / SS316L	Class 9D / IEC 61537
VHM12x25 ZnNi-HR	350 444		0.039	0.086	25	0,984		≥ 6.8	ISO 898-1	ZnNi	Class 8 / IEC 61537
VHM12x30 EZ	801 411		0.044	0.097	30	1,181		≥ 6.8	ISO 898-1	EZ	Class 1 / IEC 61537
VHM12x30 316L	801 414		0.044	0.097	30	1,181		A4	ISO 3506-1	IN316L / SS316L	Class 9D / IEC 61537
VHM12x50 EZ	801 421		0.060	0.132	50	1,969		≥ 6.8	ISO 898-1	EZ	Class 1 / IEC 61537
VHM12x50 316L	801 424		0.060	0.132	50	1,969	A4	ISO 3506-1	IN316L / SS316L	Class 9D / IEC 61537	
VHM12x50 ZnNi-HR	350 445		0.060	0.132	50	1,969	≥ 6.8	ISO 898-1	ZnNi	Class 8 / IEC 61537	
VHM12x70 EZ	801 461		0.078	0.172	70	2,756	≥ 6.8	ISO 898-1	EZ	Class 1 / IEC 61537	
VHM12x70 316L	801 464		0.078	0.172	70	2,756	A4	ISO 3506-1	IN316L / SS316L	Class 9D / IEC 61537	
VHM12x70 ZnNi-HR	350 446		0.078	0.172	70	2,756	≥ 6.8	ISO 898-1	ZnNi	Class 8 / IEC 61537	
VHM12x110 EZ	801 471		0.114	0.0131	110	4,331	≥ 6.8	ISO 898-1	EZ	Class 1 / IEC 61537	
VHM12x110 316L	801 474	0.114	0.0131	110	4,331	A4	ISO 3506-1	IN316L / SS316L	Class 9D / IEC 61537		
VHM12x110 ZnNi-HR	350 447	0.114	0.0131	110	4,331	≥ 6.8	ISO 898-1	ZnNi	Class 8 / IEC 61537		

## 2. DIMENSIONS (mm/inch)

